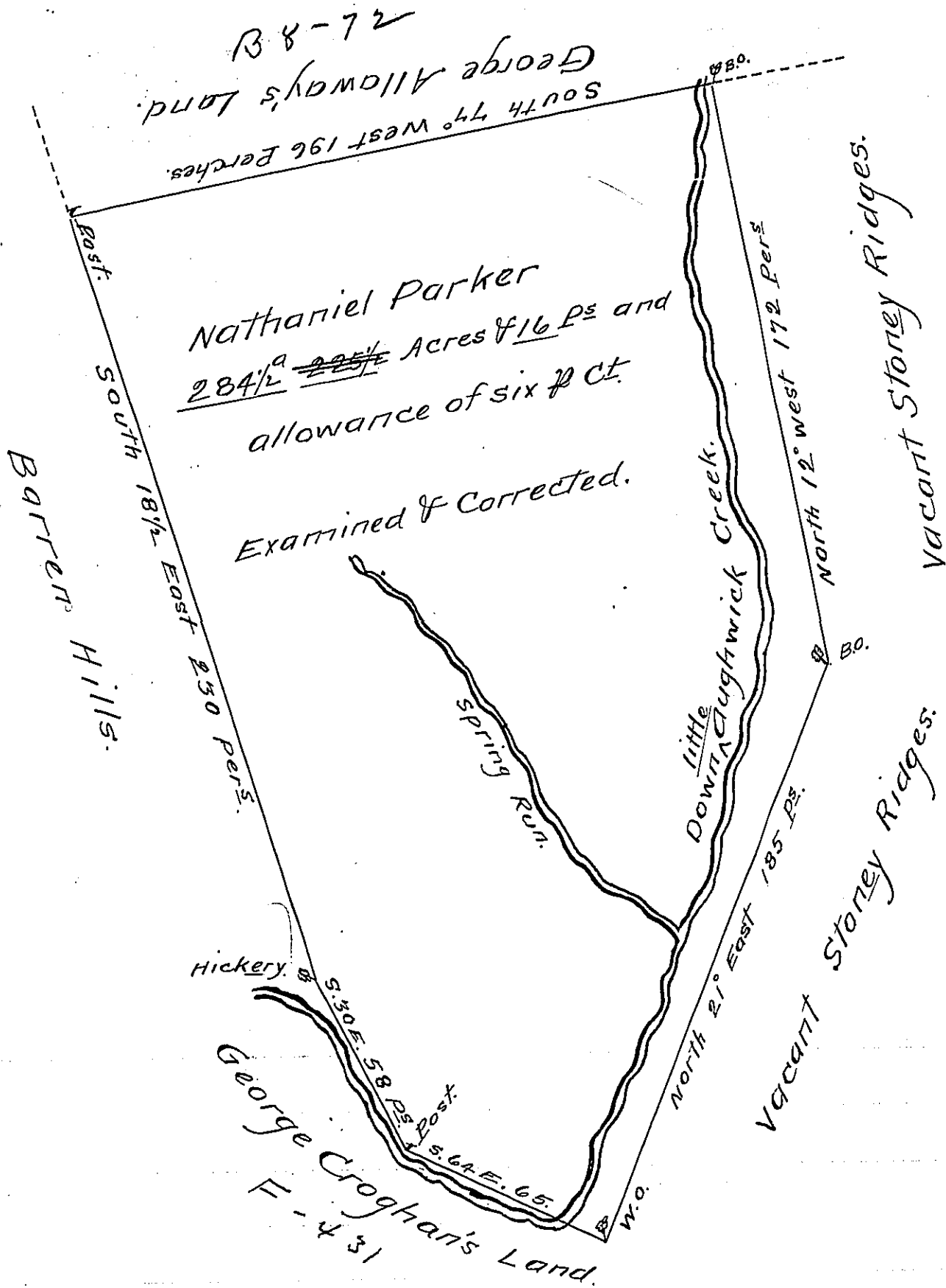


FORM NO 1.



A Draught of a Tract of Land situate on Little Aughwick at the long Bottom in the County of Cumberland containing Two hundred and ^{Eighty foot} ~~Twenty five~~ Acres and a half ~~16 Perches~~ and the usual allowance of six acres Per Cent for Roads &c. Surveyed the eighth day of June 1765 to Nathaniel Parker in pursuance of a Warrant dated the 31st day of May 1762.

J. Richard Tea

Dep^y. Survey^r.

To John Lukens Survey^r. Gen^l.

IN TESTIMONY that the above is a copy of the original remaining on file in the Department of Internal Affairs of Pennsylvania, made conformably to an Act of Assembly approved the 16th day of February, 1833, I have hereunto set my Hand and caused the Seal of said Department to be affixed at Harrisburg, this twentieth day of September 1907.

Henry Wood

Secretary of Internal Affairs.